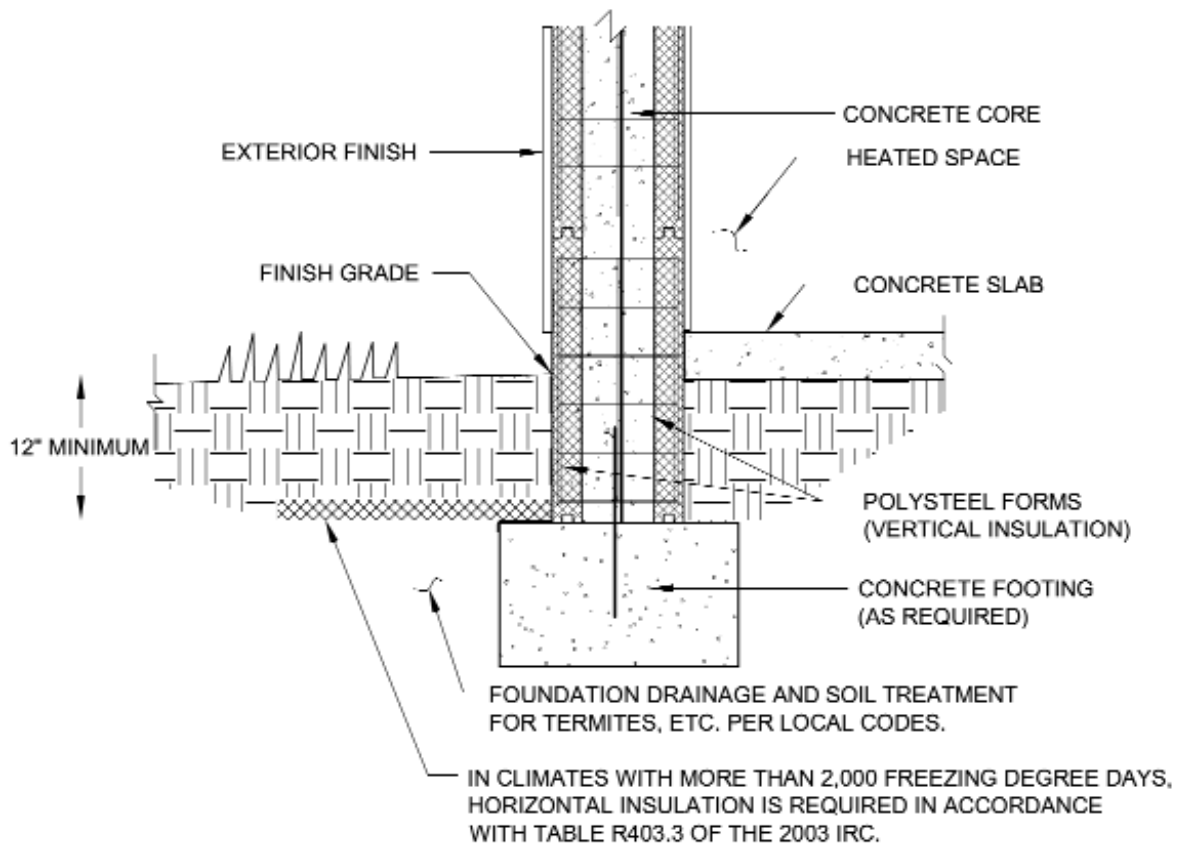


### D.3 SHALLOW FROST-PROTECTED FOOTINGS

Footings are generally required to be installed below the frost line, as determined by the established codes for the area in which you are constructing. However, an alternative solution for shallow footings (not below the frost line) has been approved by the International Residential Code (IRC), published by the International Code Council (ICC), and endorsed by the U.S. Department of Housing and Urban Development (HUD) for residential dwellings. In short, shallow footings are allowed when the footings are adequately insulated from frost, as illustrated below. All other structural requirements for the footing still apply.

FIGURE 4.1 FROST-PROTECTED FOOTINGS



Consult with your local building official to ensure that this type of footing is allowed in your area prior to commencing construction.