

## **B.7 RECOMMENDED PRODUCTS AND SERVICES**

As we have continued to improve on the techniques for installing PolySteel Forms, we have found that certain products work exceptionally well in making the process run more smoothly and effectively. In an effort to assist you in making your installation more successful, American PolySteel has developed an excellent relationship with a variety of suppliers who have developed products and services specifically for the ICF industry. While the list below is not all-inclusive, those included have performed exceptionally well with PolySteel and are recommended for use. In many instances, and unless otherwise indicated, you will find that these materials are available directly from your PolySteel Dealer at the most competitive price available. In all cases, be sure to follow the manufacturer's instructions on how to use their products, and understand the product warranty and how it may relate specifically to PolySteel Forms.

### **B.7.1 ELECTRIC HOT KNIFE.**

#### **✓ Wind-Lock Select**



One of the most useful tools you can have on a PolySteel job site, designed to hold up through multiple uses.

Hot Knife comes with blades and accessories for all types of channels, boxes, shapes, and cuts.

Other brands of this type include:  
Demand Products

### **B.7.2 BAND SAW.**

#### **✓ Jet Band Saw**



An excellent tool to have on the job site, a band saw will easily cut through the steel in the forms and speed your installation.

Jet Band Saw (JWBS-14OS, or JWBS-14CS), with a speed reduction kit for metal cutting, a riser block to increase the cutting height, and a bi-metal blade is the best system we have found.

## B.7 RECOMMENDED PRODUCTS AND SERVICES (continued)

### B.7.3 STAY-IN-PLACE FOOTING FORMS.

#### ✓ Form-A-Drain



This PVC footing forming system from Certainteed® is designed stay-in-place and provide drainage for the foundation as an integral part of the footing form.



**FORM-A-DRAIN®**

### B.7.4 FOAM ADHESIVES.

#### ✓ Foam2Foam®



Foam2Foam is the best method for gluing forms together, securing them to the footing, or attaching items directly to the forms. This is the “duct tape” for the ICF industry.

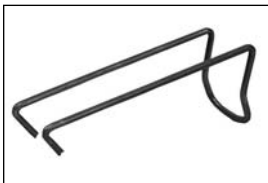
Applied with a gun from a pressurized can that has the capacity to glue approximately 70 forms together.

**Wind-lock®**

Other brands of this type include:  
EnerFoam®

### B.7.5 CAROLINA CLIPPERS.

#### ✓ Carolina Clipper



A wire clip designed specifically to mechanically connect PolySteel Forms together both vertically and horizontally, in lieu of using a foam adhesive for this purpose. Convenient, flexible, and cost effective. See Section D.4 for instructions for how to use this unique innovation.



## B.7 RECOMMENDED PRODUCTS AND SERVICES (continued)

### B.7.6 REBAR SADDLES.

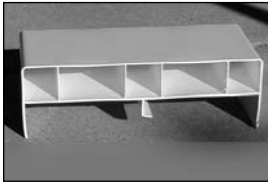
#### ✓ Speed Saddles



Wire saddles specifically designed to hold and restrain vertical and horizontal rebar in place in PolySteel Forms. Provide accommodation for proper overlap and available for centered or offset vertical rebar.

### B.7.7 WINDOW AND DOOR BUCKS.

#### ✓ VBuck®



Lumber can be found anywhere you purchase building materials, however, we recommend the use of VBuck® vinyl forming material for this purpose.

VBuck material comes in 16' standard lengths. Patented and designed specifically for ICFs. Available for all sizes of PolySteel Forms and all window opening designs, including arches, ellipses, angles, etc.



### B.7.8 BRACING AND ALIGNMENT SYSTEMS.

#### ✓ Panel Jack®



We recommend the Panel Jack® bracing, alignment and scaffolding system, from Reechcraft, above all others. The system is designed for ICFs, is OSHA compliant, and built to last. This adjustable steel and aluminum wall alignment system is available in various lengths, including a tall wall system. Panel Jack offers an integral turnbuckle, scaffold platform brackets, guard rails, and a variety of other accessories for a safe, complete system.



#### ✓ Steel Turnbuckles

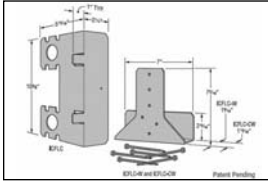


Turnbuckles for wood or steel studs allow you to adjust bracing constructed on site. A valuable tool if you do not have the Panel Jack system.

**B.7 RECOMMENDED PRODUCTS AND SERVICES (continued)**

**B.7.9 FLOOR LEDGER SYSTEMS.**

**✓ Simpson ICF Ledger System**



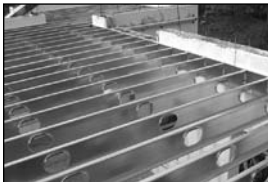
The Simpson ICF Ledger system is discussed in detail in Section C.13.1 of this Manual and is highly recommended.

Other brands of this type include:  
Anchor Tunnels.



**B.7.10 STEEL FRAMING SYSTEMS.**

**✓ Dietrich Industries**

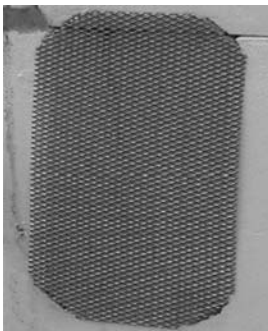


Many PolySteel customers look for superior framing materials for their interior walls, floor, and roof trusses. While you may find alternative sources for steel framing, we recommend Dietrich Steel framing and Dietrich Trade Ready Floor Systems, which can improve the overall performance and durability of your project.



**B.7.11 INTERIOR WALL ANCHOR.**

**✓ Grappler**



One of the best methods for reinforcing the attachment of heavy objects or trim work to your PolySteel wall, particularly in areas in between the PolySteel attachment studs, is the Grappler, from Wind-Lock. This expanded metal plate is secured behind the drywall and holds the screws needed to secure any type of material to the wall.



## B.7 RECOMMENDED PRODUCTS AND SERVICES (continued)

### B.7.12 FOUNDATION WATERPROOFING SYSTEMS.

While there are many systems available that work well, it is important to use only systems that are compatible with EPS foam. Petroleum-based products can damage the foam and should be avoided. As these materials bond directly to the foam, be sure that the walls are clean, and that any oxidation on the forms has been removed.

#### ✓ Protecto Wrap



A sheet membrane material that comes in rolled form and overlaps to provide a continuous waterproof sealant for the wall.

Other brands of this type include:  
Tamko, Carlisle, and Polyguard

#### ✓ Blue Seal



A water-based material that can be sprayed on or applied with a trowel. Care should be taken to adequately seal all joints and seams.

#### ✓ Platon



A dimpled sheet material that is designed to provide both a drainage mat and waterproofing system. It is mechanically applied at the top of the foundation and comes with a 30-year warranty.

Other brands of this type include:  
Enka-Drain, and Delta MS

### B.7.13 STUCCO AND TEXTURED ACRYLIC SURFACING SYSTEMS

PolySteel is the ideal wall system for stucco finishes of all types. There are many excellent synthetic stucco finishes on the market, otherwise known as TASS (for textured acrylic surfacing systems). We have achieved a non-combustible construction rating with the products from **degussa** and **Master Wall**, which we highly recommend.

#### ✓ degussa



#### ✓ Masterwall



## B.7 RECOMMENDED PRODUCTS AND SERVICES (continued)

### B.7.14 FIBER CEMENT SIDING

Fiber Cement Siding is an exceptional choice for an exterior finish, which adds both beauty and durability to any PolySteel project. Our steel ties are recommended as the ideal attach point for these heavy materials and we recommend the siding and panel products of the James Hardie Company.

#### ✓ James Hardie

