

A.1 THE POLYSTEEL® PS•4000 FORM

(U.S. patent No. 4,879,855 and Patents Pending)

Our PolySteel PS•4000 Series Flat Wall Form is an innovative polystyrene and steel form for the construction of super-insulated concrete walls. Its core design creates a solid reinforced concrete wall based on traditional solid wall construction, and the stay-in-place expanded polystyrene insulation provides a stable foundation and integrated steel attachment studs for the secure attachment of wall coverings, in addition to providing a superior effective R-value rating.

As a form for wet concrete, the PolySteel Form is significantly stronger than other Insulating Concrete Forms (ICF's). PolySteel PS•4000 Forms are held together with eight unique attachment and reinforcement members ("ties") made of 11-gauge welded steel wire for maximum strength, and galvanized for long-term durability. Each tie is further reinforced on both sides with a welded 1-1/2" wide by 21" tall 22-gauge galvanized steel attachment stud, which delivers superior strength and fire resistance for the secure attachment of wall coverings. The studs are recessed 1/2" below the surface of the foam and are identified by vertical lines that run the full height of the form on each side of the studs, which are conveniently spaced every 6" on center. In the completed wall system, each welded attachment stud is rigidly anchored to the concrete by the galvanized welded steel tie. Drywall screws or other common sheet-metal screws, are used for attaching any type of interior or exterior wall covering to these studs. Drywall, lathe and plaster, siding, stucco, brick or stone veneer, etc., can all be applied to PolySteel Forms to achieve whatever finished look you may desire.

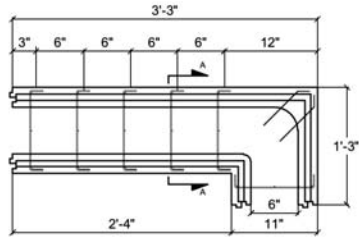
PolySteel PS•4000 Forms are currently manufactured in two core sizes, 6" and 8", with outside dimensions of 11" and 13", respectively. The PS•4000 is a full 24", or two feet, tall (PS•4000-2) with a complimentary line of "half-size" forms that are 12" tall (PS•4000-1), to help minimize cutting in the field. We also offer 90° and 45° molded corner forms in both sizes. All PolySteel Forms have an integral tongue-and-groove design which locks the forms together during assembly and provides a continuous barrier of insulation for the finished wall. The placement of the form ties and the design of the tongue and groove on each end of the form also allow the forms to be installed in either direction (reversible), thereby speeding the installation process.

The PS•4000 label identifies the form as our Flat Wall ICF.

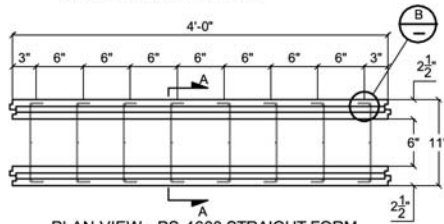
The drawings and table on the following pages illustrate the PolySteel PS•4000 Product Line and provide important technical information about dimensions, wall area, and the concrete requirements of the PS•4000 System.

A.1 THE POLYSTEEL® PS•4000 FORM (continued)

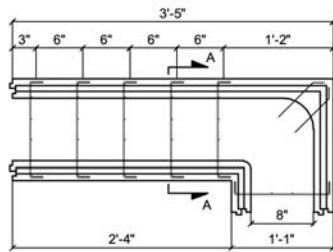
SAMPLE DRAWINGS
PolySteel PS•4000 Forms



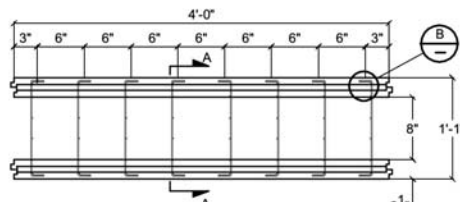
PLAN VIEW - PS-4690-R CORNER
(RIGHT-HAND SHOWN)
(LEFT-HAND OPPOSITE, PS-4690-L)



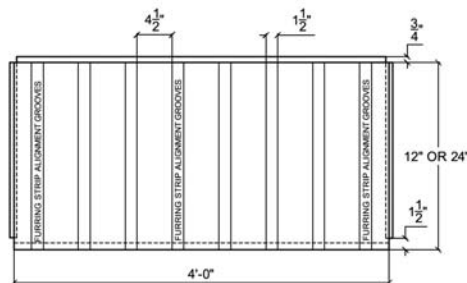
PLAN VIEW - PS-4600 STRAIGHT FORM



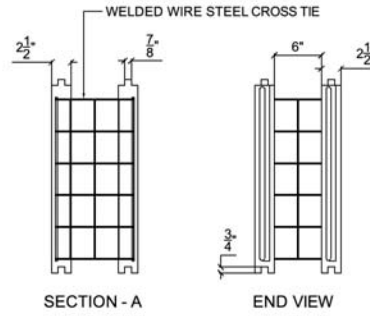
PLAN VIEW - PS-4890-R CORNER
(RIGHT-HAND SHOWN)
(LEFT-HAND OPPOSITE, PS-4890-L)



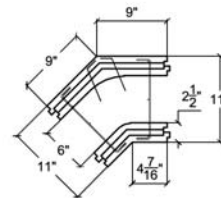
PLAN VIEW - PS-4800 STRAIGHT FORM



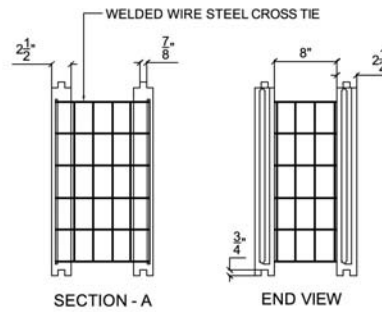
SIDE VIEW - PS-4000 SERIES STRAIGHT FORMS



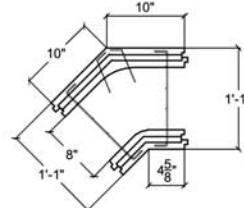
SECTION - A **END VIEW**



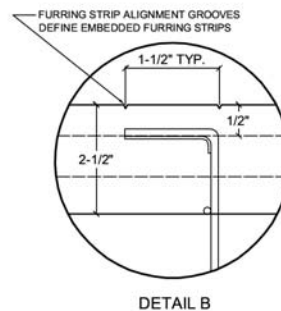
PLAN - PS-4645 CORNER



SECTION - A **END VIEW**



PLAN - PS-4845 CORNER



DETAIL B

A.1 THE POLYSTEEL® PS•4000 FORM (continued)

The following table can be used to identify the various PS•4000 Forms, their dimensions, and to estimate the amount of concrete needed for your PolySteel project, based on the number and type of forms used and/or the total wall area to be filled.

PS • 4000-2 FLAT WALL ICF

Model #	Description	Height	Outside Length	Outside Width	Square Ft. Outside Wall Area	Forms Filled Per Yard	Wall Area Per Yard
PS•4600-2	6" Straight	24"	48"	11"	8.00	6.75	54.00
PS•4645-2	6" 45° Corner	24"	18"	11"	3.00	24.35	73.00
PS•4690-2	6" 90° Corner	24"	54"	11"	9.00	7.50	67.50
PS•4800-2	8" Straight	24"	48"	13"	8.00	5.00	40.00
PS•4845-2	8" 45° Corner	24"	20"	13"	3.33	16.75	55.50
PS•4890-2	8" 90° Corner	24"	58"	13"	9.66	5.50	53.00

PS • 4000-1 FLAT WALL ICF

Model #	Description	Height	Outside Length	Outside Width	Square Ft. Outside Wall Area	Forms Filled Per Yard	Wall Area Per Yard
PS•4600-1	6" Straight	12"	48"	11"	4.00	13.50	54.00
PS•4645-1	6" 45° Corner	12"	18"	11"	1.50	48.70	73.00
PS•4690-1	6" 90° Corner	12"	54"	11"	4.50	15.00	67.50
PS•4800-1	8" Straight	12"	48"	13"	4.00	10.00	40.00
PS•4845-1	8" 45° Corner	12"	20"	13"	1.66	33.50	55.50
PS•4890-1	8" 90° Corner	12"	58"	13"	4.83	11.00	53.00

