

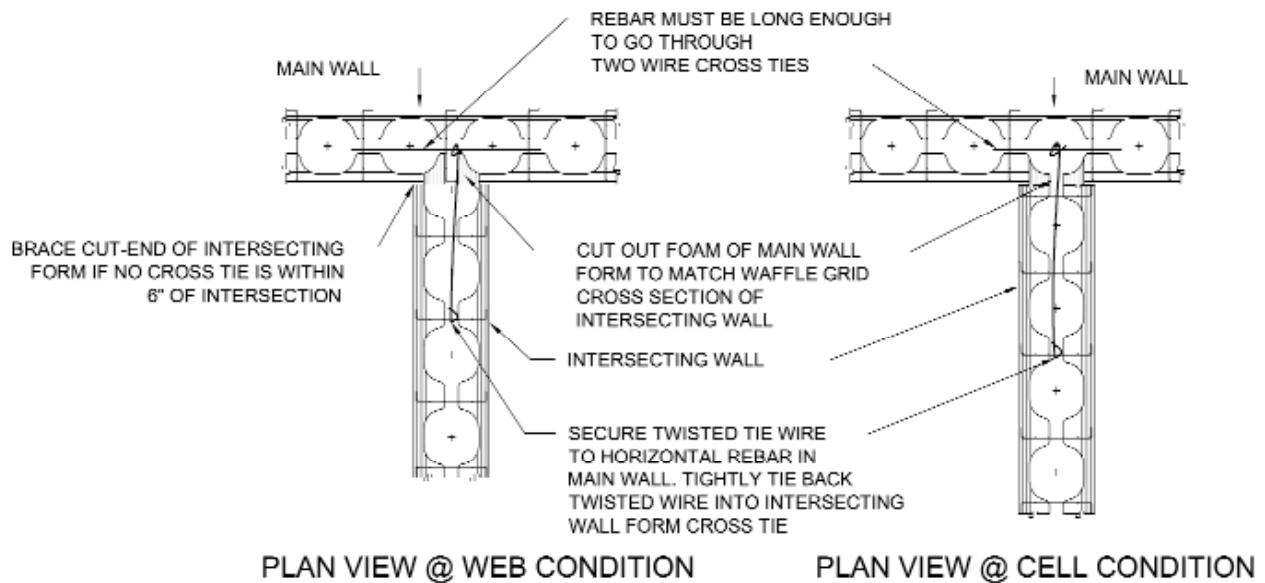
## C.11 INTERSECTING WALLS

### C.11.1 POLYSTEEL WALLS

If your project calls for an intersection between two PolySteel walls, follow the steps and the illustration below on each course of forms to ensure the structural integrity of the entire wall.

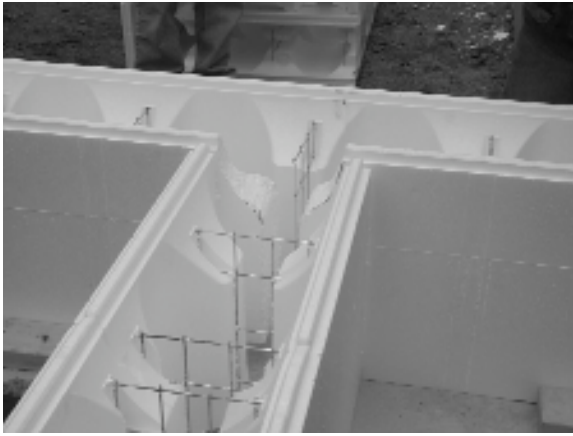
1. Butt the end of the intersecting form to the side of the wall form at the location of the intersection. Remove tongues from the intersecting form.
2. Cut an opening in the wall form that matches the profile of the opening at the end of the intersecting form.
3. Insert an 18" piece of rebar through the form ties of the wall form on both sides of the intersection. This is not structural rebar, so do not be concerned that it is pressed against the wall of the form.
4. Use doubled-up 16-gauge tie wire to tie the rebar to the second steel tie of the intersecting form and twist the wire until the forms are securely tied together.
5. Install horizontal rebar at the required locations with proper overlap.
6. No additional bracing is required to support this intersection during the placement of concrete.

Figure 3.12 "T" INTERSECTION CUT-OUT VARIATIONS

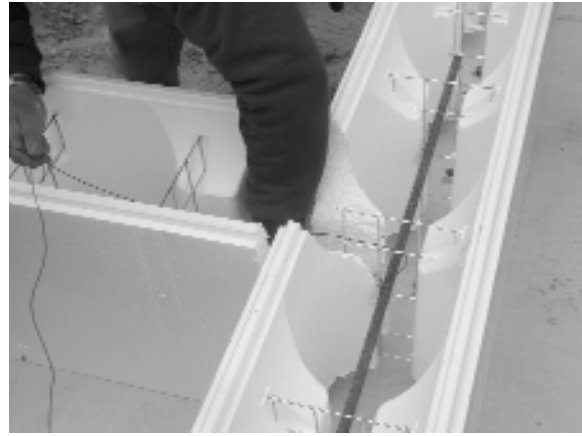


## C.11 INTERSECTING WALLS (continued)

### C.11.1 POLYSTEEL WALLS (continued).



BUTT FORMS TOGETHER



FIRMLY SECURE WITH WIRE

### C.11.2 FRAMED PARTITION WALLS.

Interior partition walls are generally attached to the top and bottom plates of the wall, eliminating the need to attach these walls directly to the PolySteel wall. If you have a specific requirement, or desire, you may attach these partitions directly to the wall in one of the following ways.

- ✓ If the partition wall aligns directly with a PolySteel attachment stud, you can screw the framing material directly to the wall at this location.
- ✓ You can attach the framing material directly to the wall with a foam adhesive (e.g. Foam2Foam)
- ✓ You can use a piece of 20-gauge sheet metal to bridge across two attachment studs and screw the framing material to the steel.
- ✓ You can snap a chalk line to mark the center of the intersecting wall stud and pre-install anchor bolts six inches from the top and bottom, and in the middle of the stud location. Drill holes in the framing stud to align with the bolts and secure them in place after the concrete has set.